



**ST. THOMAS COLLEGE OF TEACHER EDUCATION, PALA**  
**Research Centre in Education approved by**  
**M.G. University, Kottayam, Kerala**



# **“SKILL POLISHER”**

**STUDENT CAPACITY BUILDING PROGRAMME**

**SCBPE02**

## **Voyage of Insight**

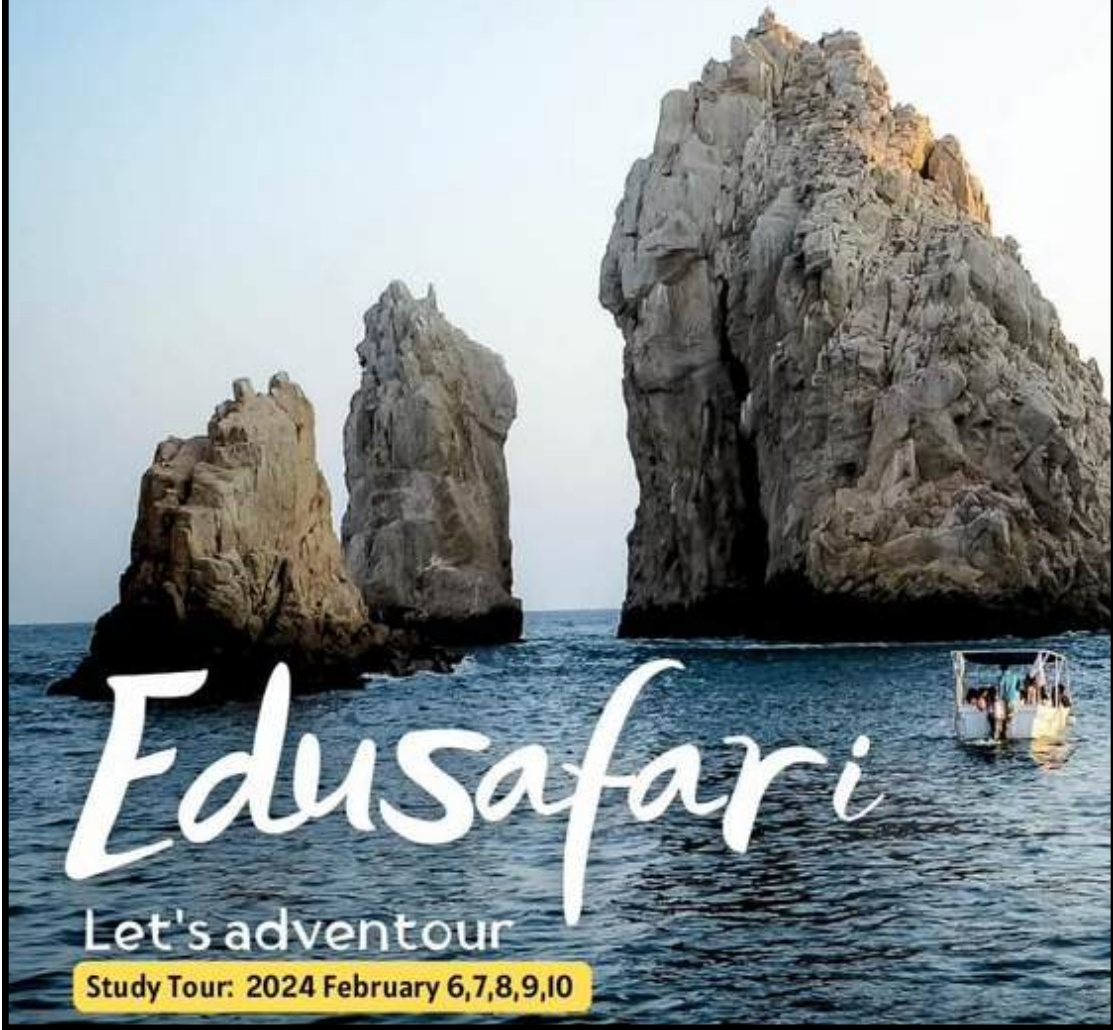
**-College Tour Programme**

### **Expected Outcomes**

Participating in tour programmes significantly enhances various capacities among individuals. Firstly, it fosters cultural awareness and understanding, allowing participants to gain firsthand experience of different lifestyles, traditions, and perspectives. This exposure helps in developing empathy and tolerance towards others. Additionally, tour programs often involve problem-solving and adaptability, as participants navigate unfamiliar environments and overcome unexpected challenges. Such experiences also improve communication skills, as individuals interact with diverse groups of people.



2022-2024  
B.Ed. Barch



# EduSafari

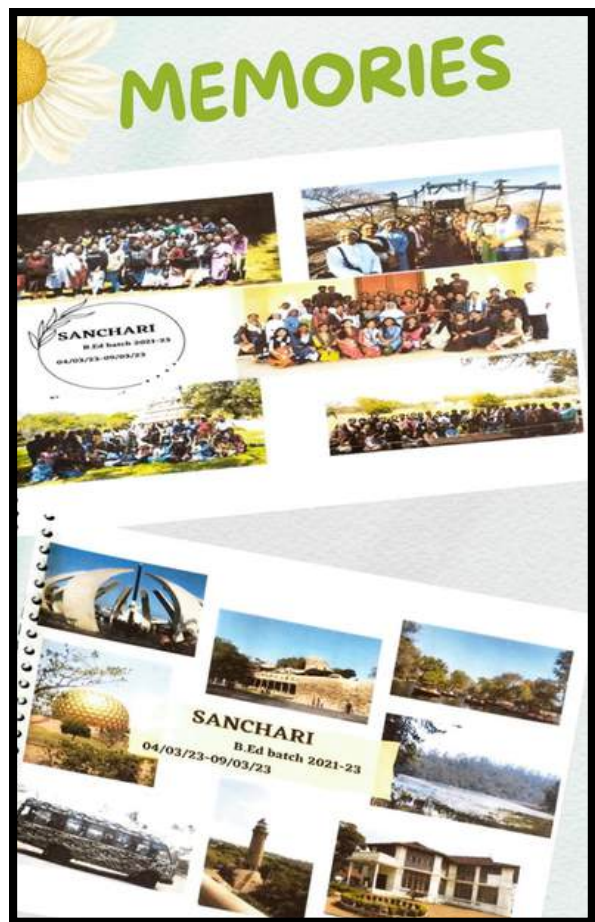
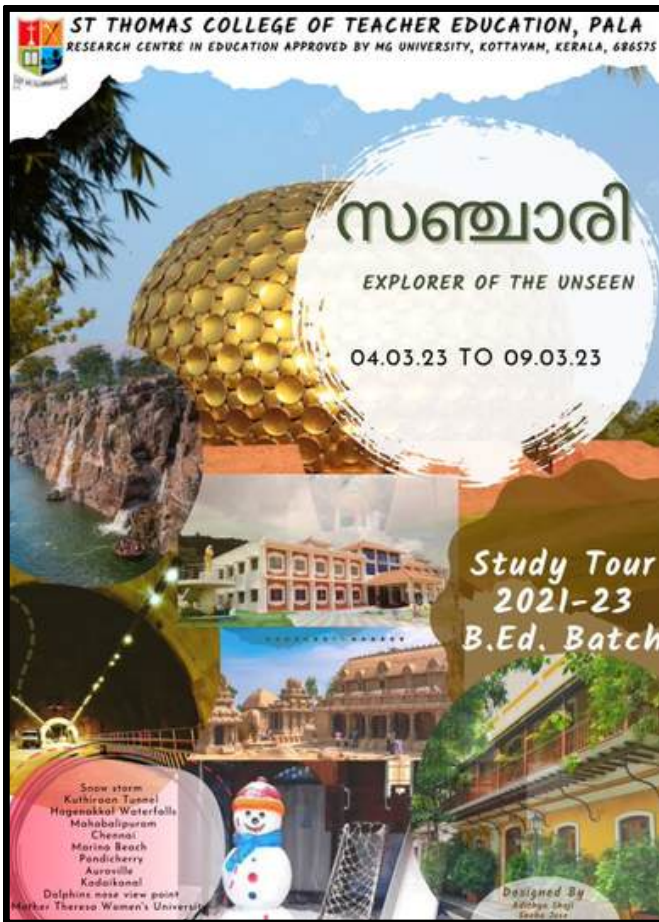
Let's adventour

Study Tour: 2024 February 6,7,8,9,10

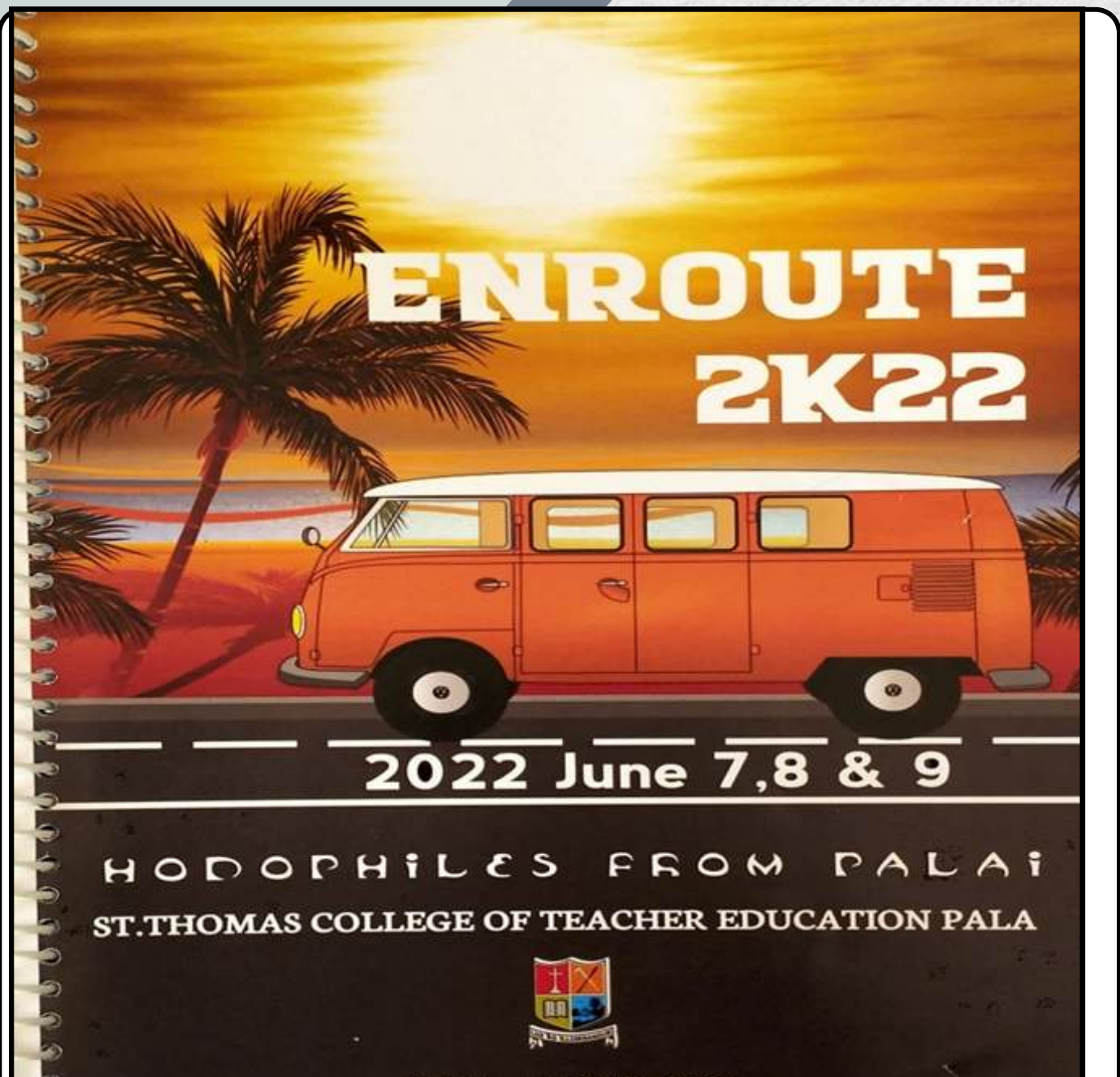




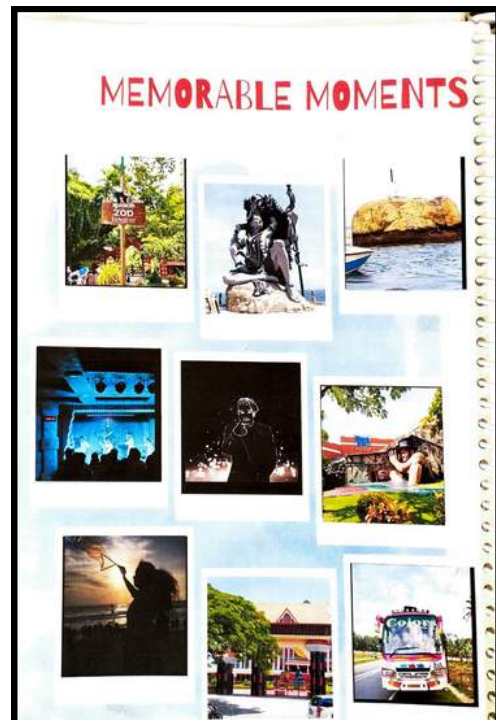
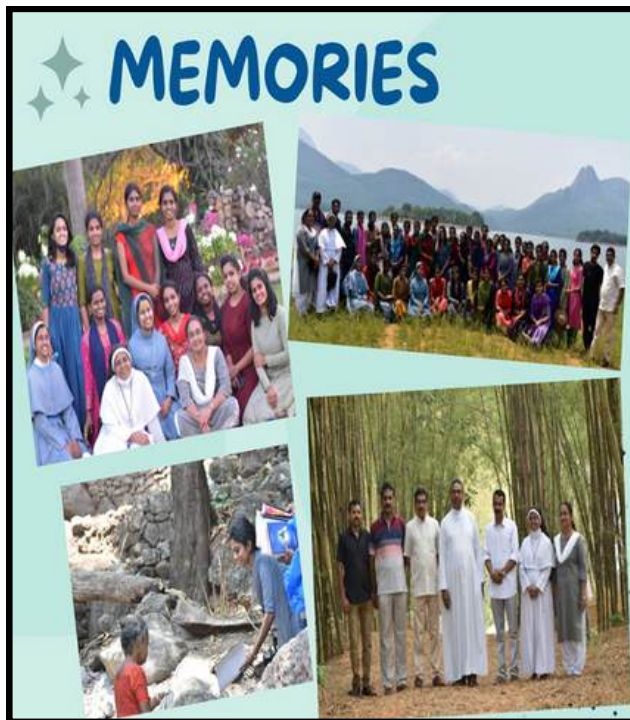
**2022-24 Batch Tour Programme**



**2021-23 Batch Tour Programme**



**The "Voyage of Insights" college tour program provided a unique opportunity for students to explore diverse educational institutions and places and gain valuable perspectives. The program involved visits to various colleges, places where students interacted with faculty members, observed teaching methodologies, and explored campus facilities and experienced various cultures. Through these experiences, students gained a deeper understanding of different educational approaches, cultures, and career pathways. The "Voyage of Insights" proved to be an enriching experience, broadening students' horizons and inspiring them in their academic pursuits.**



**2020-22 Batch Tour Programme**