



ST. THOMAS COLLEGE OF TEACHER EDUCATION, PALA
Research Centre in Education approved by
M.G. University, Kottayam, Kerala



“SKILL POLISHER”

STUDENT CAPACITY BUILDING PROGRAMME

SCBPE02

Voyage of Insight

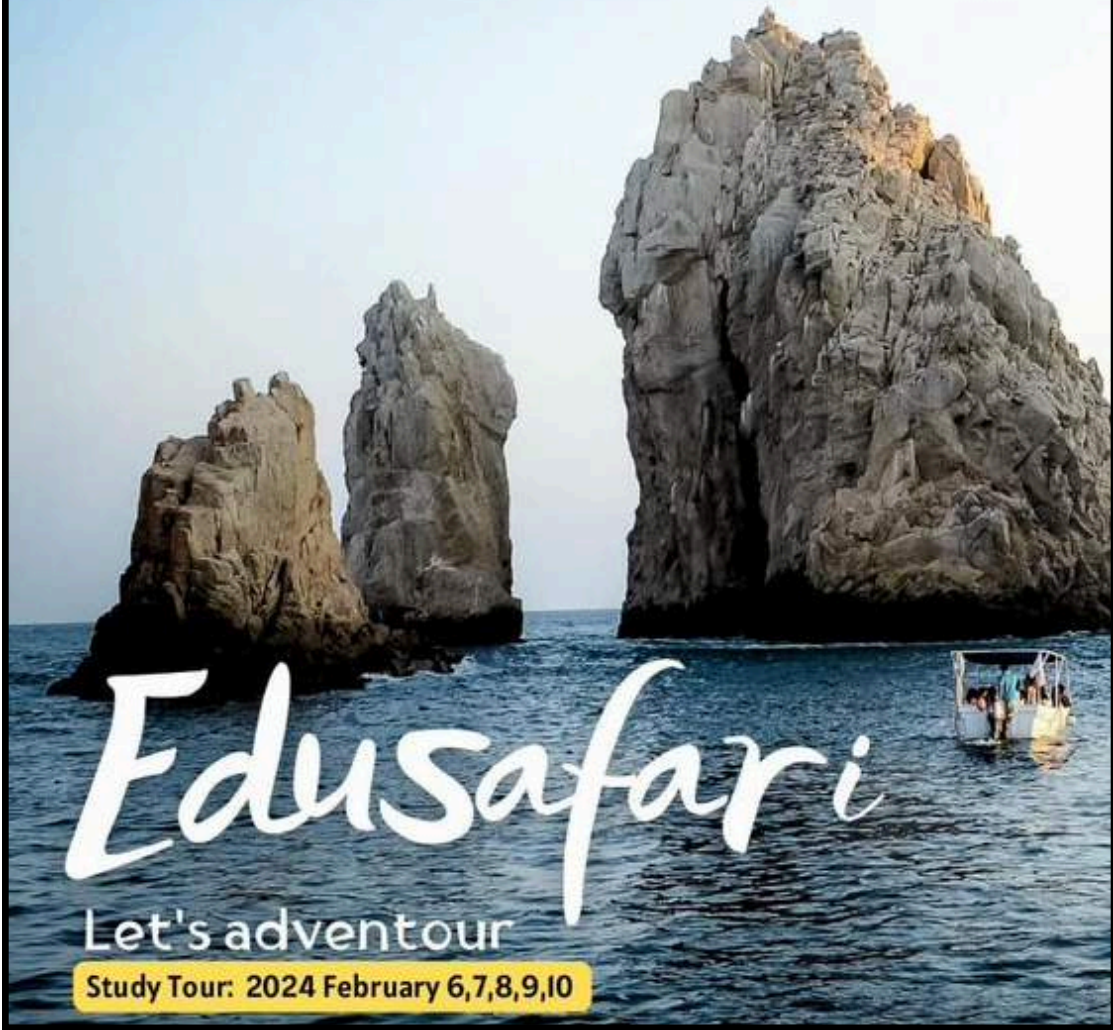
-College Tour Programme

Expected Outcomes

Participating in tour programmes significantly enhances various capacities among individuals. Firstly, it fosters cultural awareness and understanding, allowing participants to gain firsthand experience of different lifestyles, traditions, and perspectives. This exposure helps in developing empathy and tolerance towards others. Additionally, tour programs often involve problem-solving and adaptability, as participants navigate unfamiliar environments and overcome unexpected challenges. Such experiences also improve communication skills, as individuals interact with diverse groups of people.

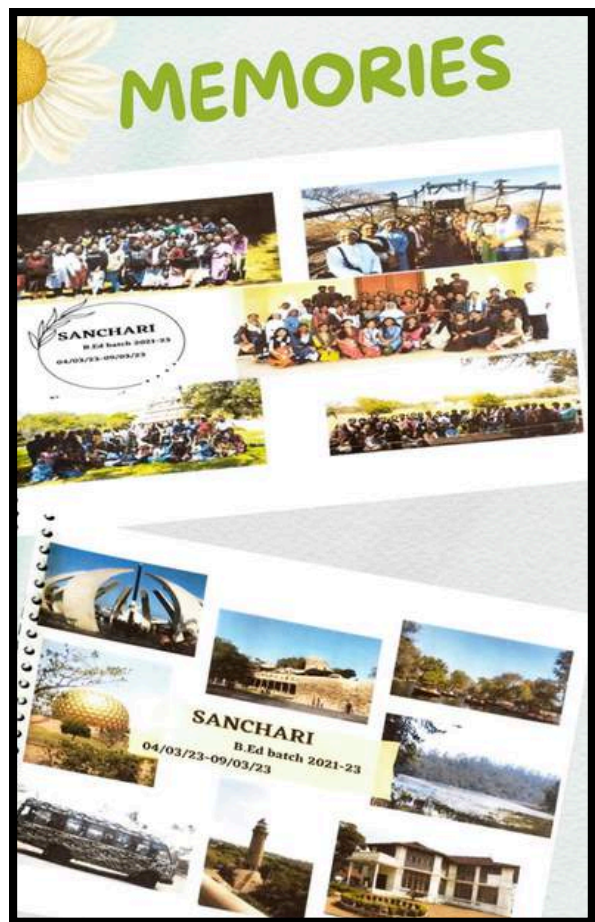
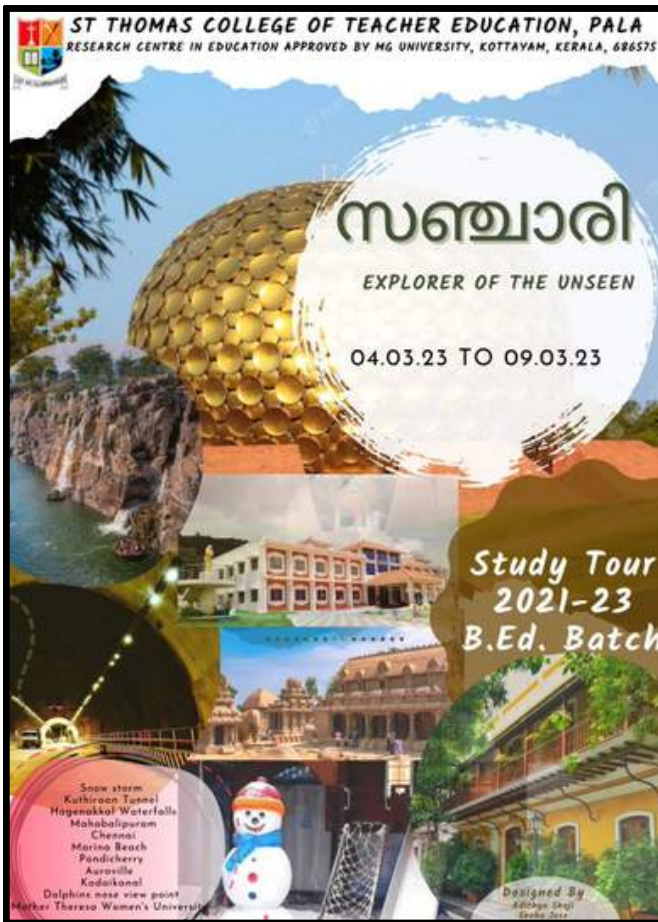


2022-2024
B.Ed. Barch





2022-24 Batch Tour Programme



2021-23 Batch Tour Programme

ENROUTE 2K22

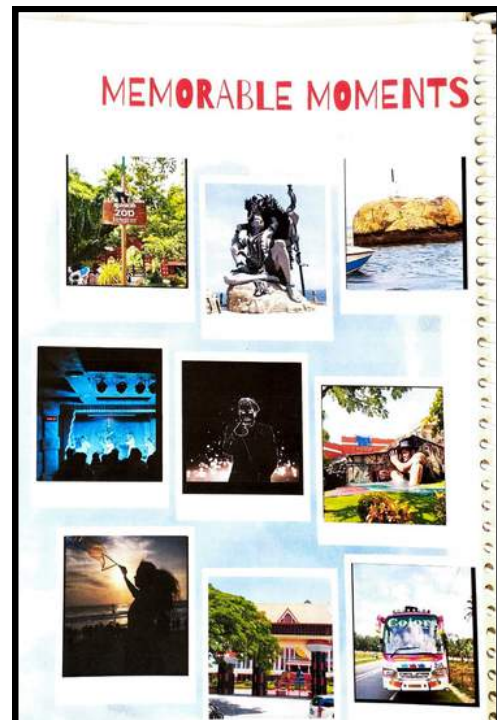
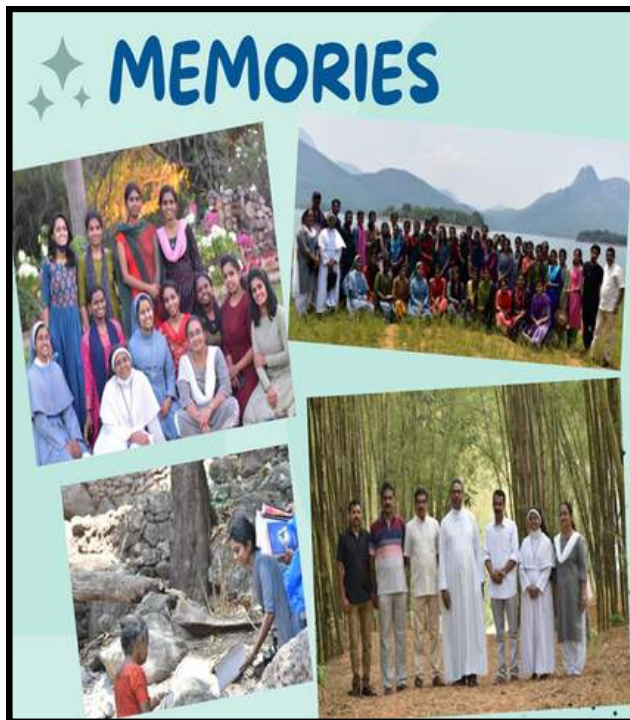


2022 June 7, 8 & 9

HODOPHILES FROM PALAI
ST. THOMAS COLLEGE OF TEACHER EDUCATION PALA



B.Ed. batch 2020-2022



2020-22 Batch Tour Programme