

ST. THOMAS COLLEGE OF TEACHER EDUCATION, PALA, KERALA

STUDENT SATISFACTION SURVEY (2021-2022)

This survey consists of four major components; Teaching, Learning and Evaluation, Learning Environment, Facilities in the Institution and General information regarding the functioning of the institution. The first component analyses, the academic level of the college, The learning and evaluation activities organized in the college, Proficiency of teachers in teaching and evaluation, Efficacy of the B.Ed. /M.Ed. programme on perspectives of education, Academic advising and research mentoring of the faculty of the institution, Accessibility of teaching faculty in matters related to academic and personal guidance, Academic ability and academic collaboration among fellow students, Relevance of education/ICT offered by the college for your future life, The importance given by the institution for value-based education, etc.

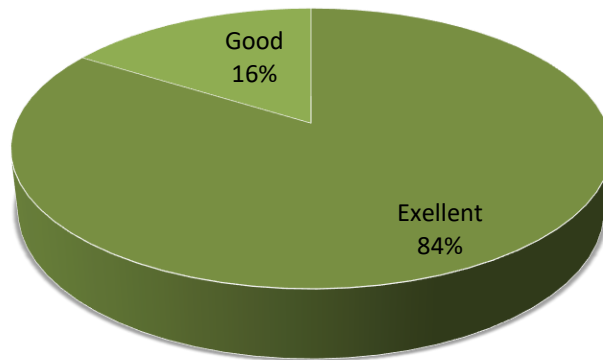
The second component learning environment describes; The provisions and activities for the all-round development of the individual, Help provided by the mentor, Safety in the campus, help rendered by the administrative staff, Sports and recreational facilities of the institution, Diversity and quality of the co-scholastic activities offered, Functioning of student clubs, The extension activities offered in the college, Opportunity for learning by doing, Student diversity and social life in the campus, etc.

Facilities in the institution analyses; The infrastructural facilities in the college, Maintenance of the facilities in the college, Canteen facilities in the college, Ease of accessing library resources, Classrooms and laboratory facilities of the college, Student support facilities of the institution, Sports and fitness facilities of the college, Career counseling and placement services offered by the college, etc.

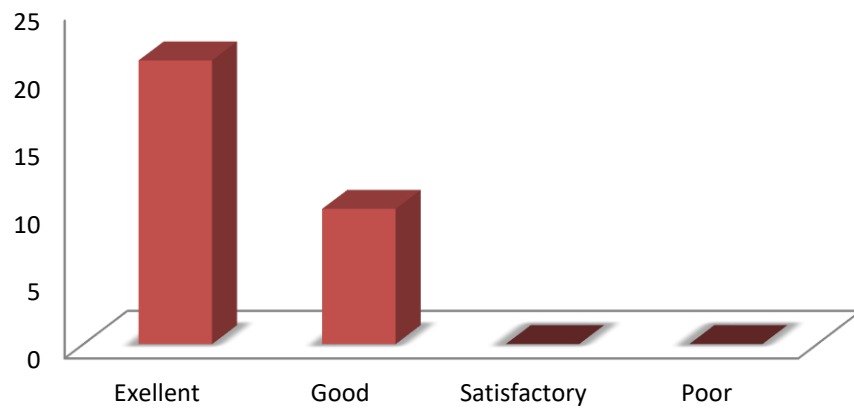
Regarding the general information, the students shared their satisfaction with respect to the college policies, Opinion on recommending this institution for others, Overall Quality level of the Institution and their general comments on the strengths and weaknesses of the institution

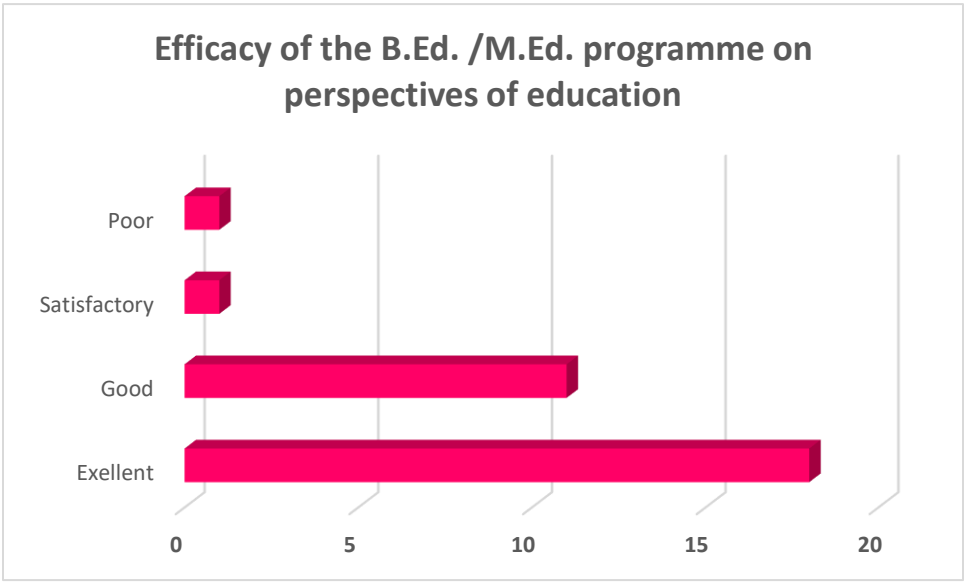
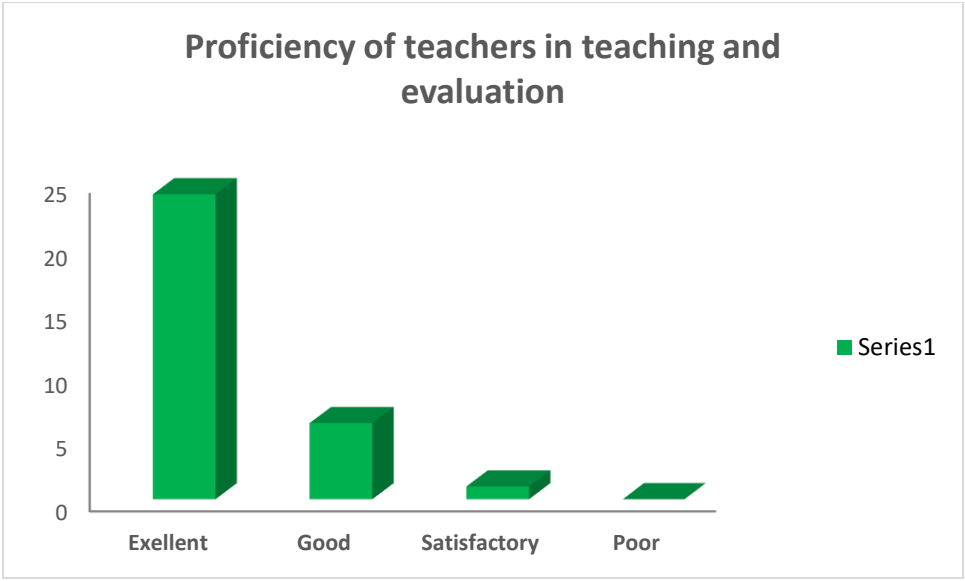
The major findings are given below;

The academic level

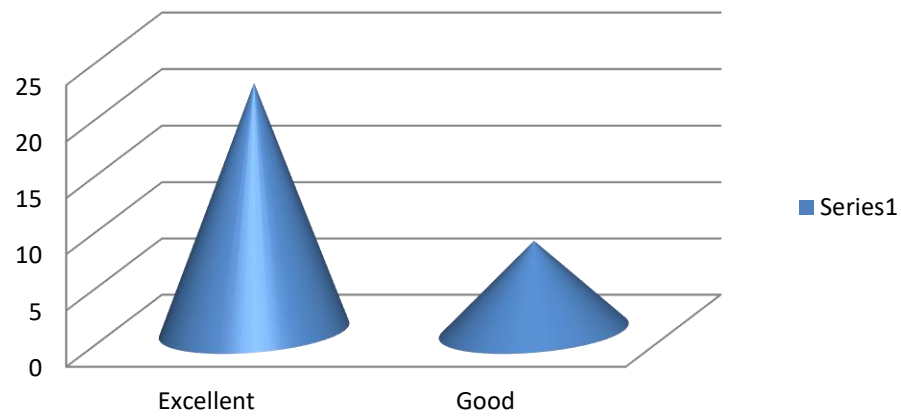


The learning and evaluation activities

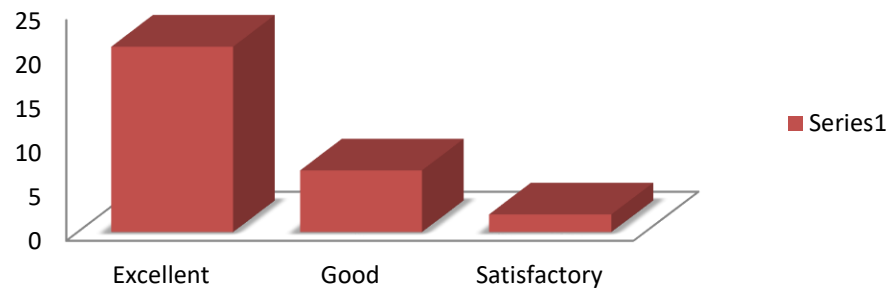




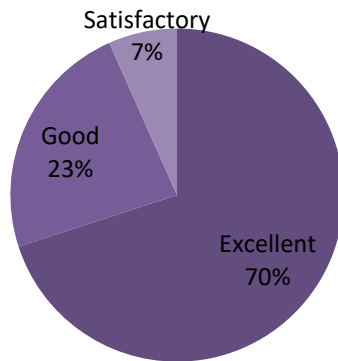
Academic advising and research mentoring of the faculty of the institution



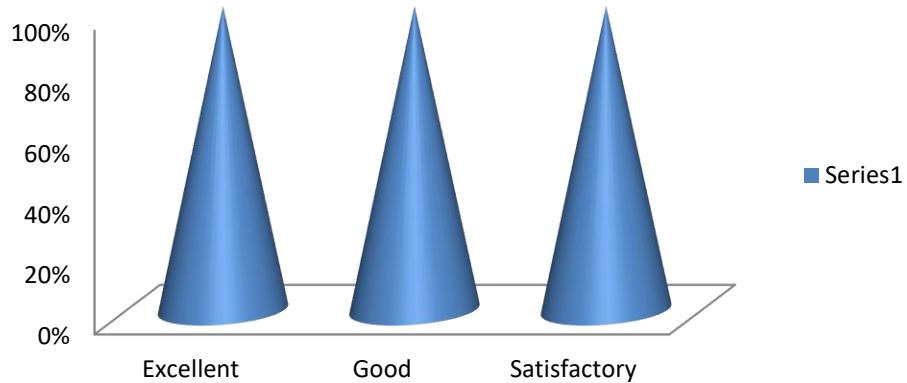
Accessibility of teaching faculty in matters related to academic and personal guidance



Academic ability and academic collaboration among fellow students



Relevance of education/ICT offered by the college for your future life

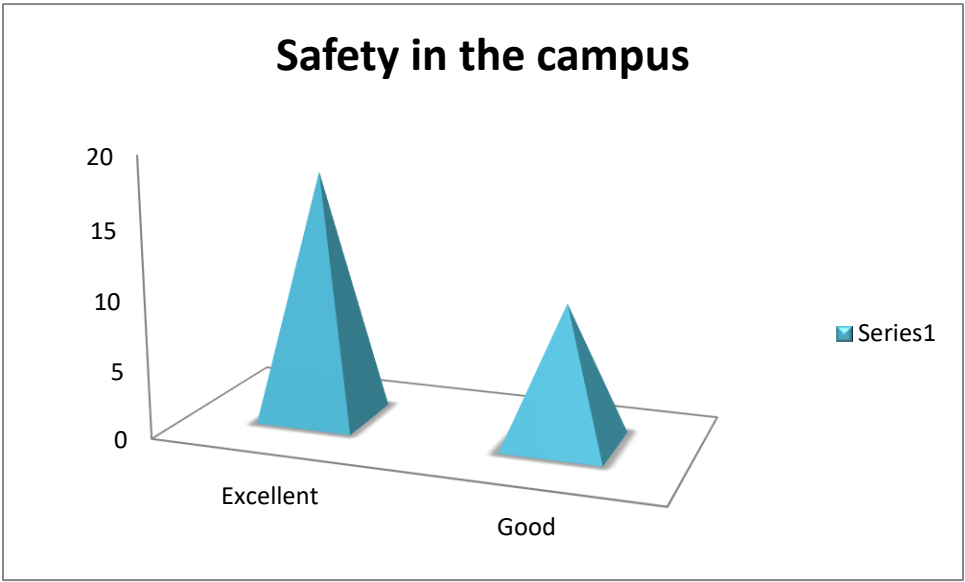
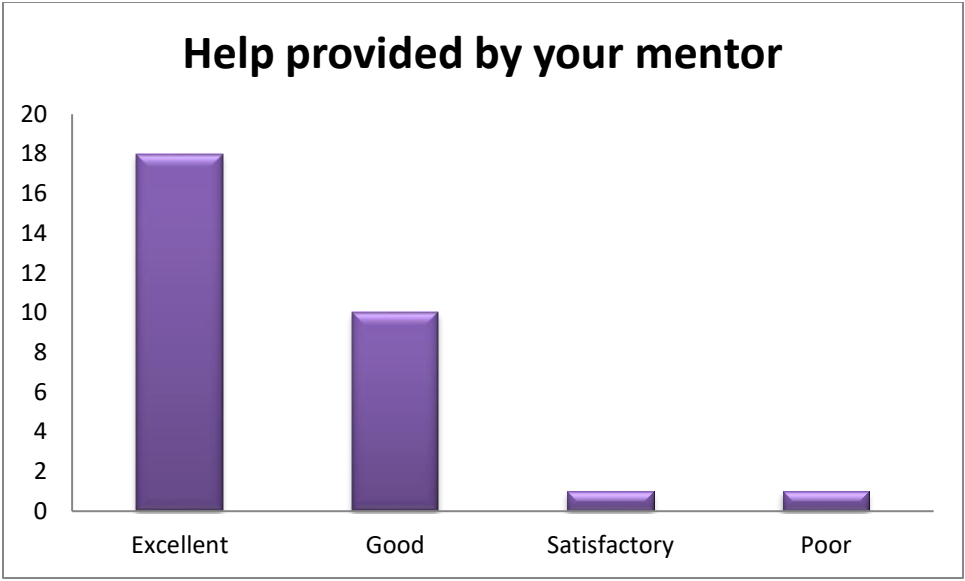


The importance given by the institution for value-based education

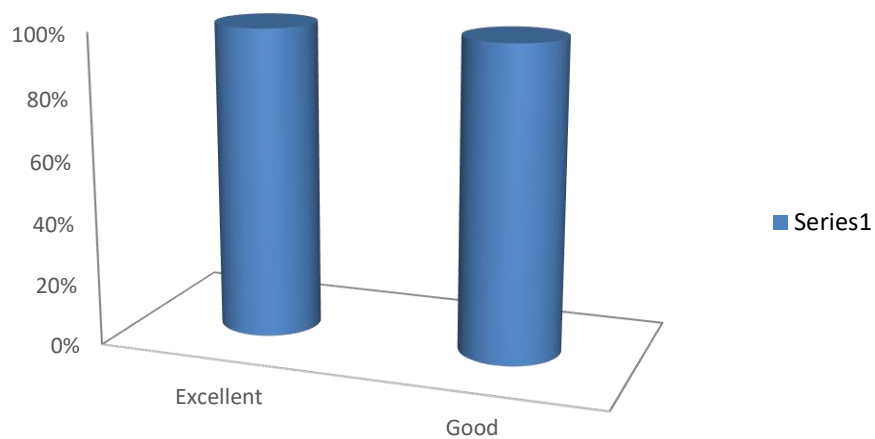


The provisions and activities for the all-round development of the individual

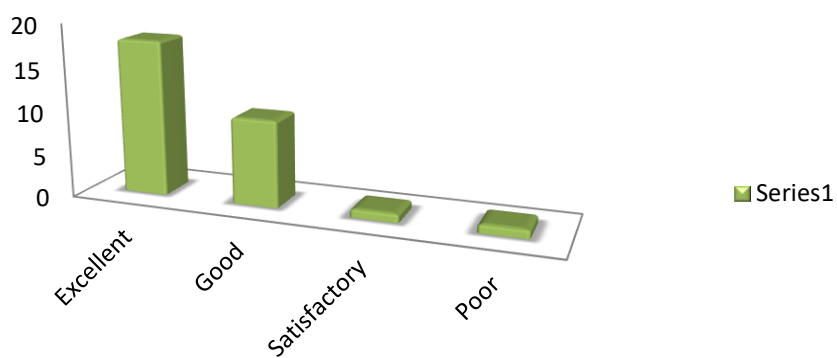




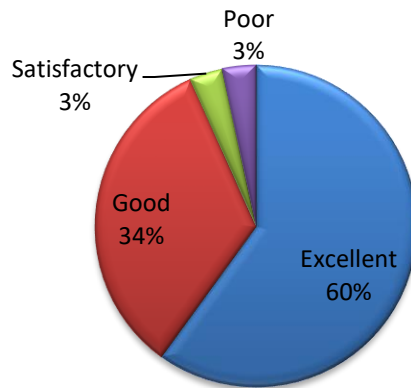
Help rendered by the administrative staff



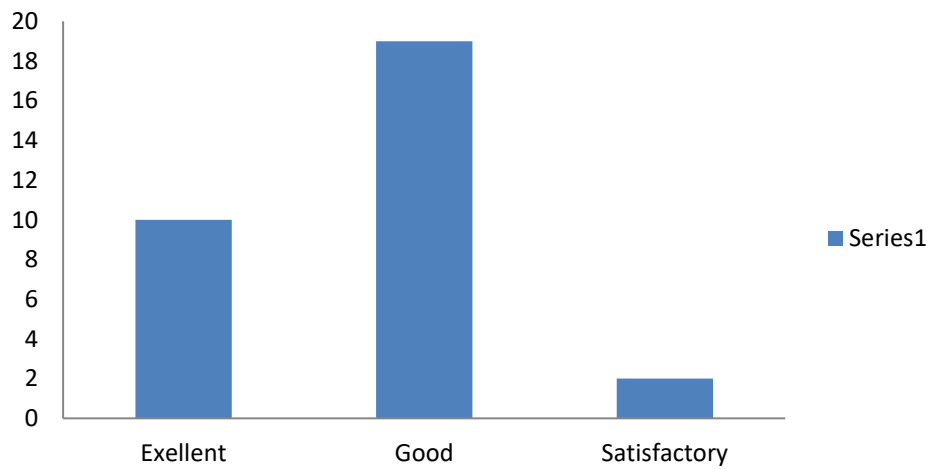
Sports and recreational facilities of the institution



Diversity and quality of the co-scholastic activities offered



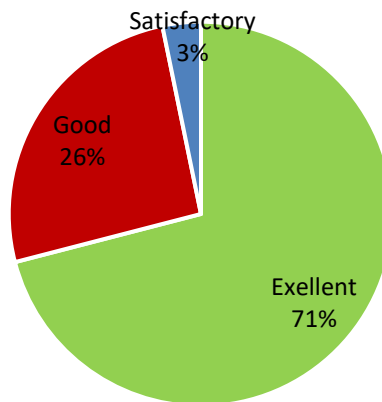
Functioning of student clubs



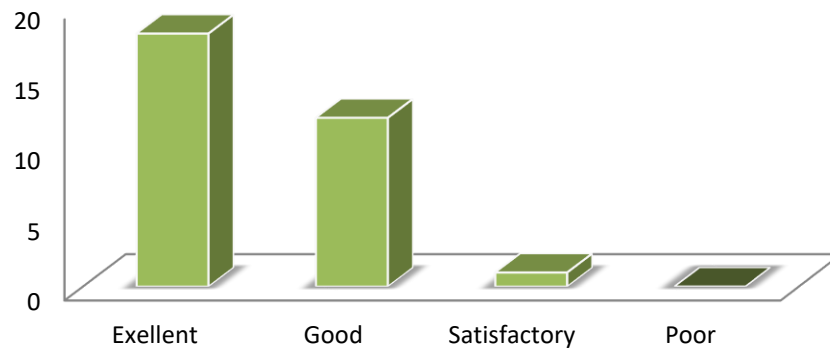
The extension activities offered in the college



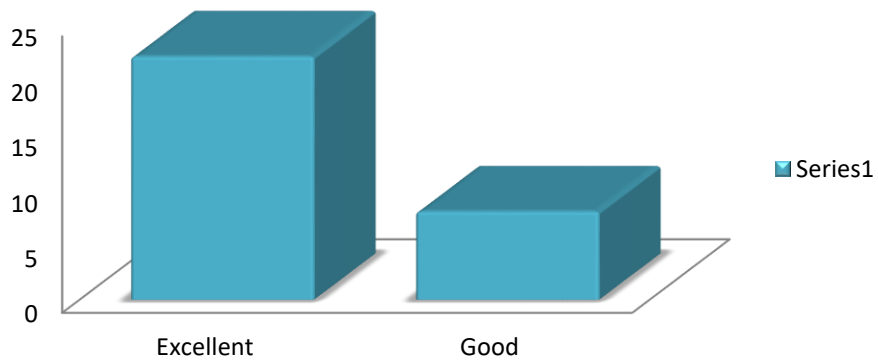
Opportunity for learning by doing



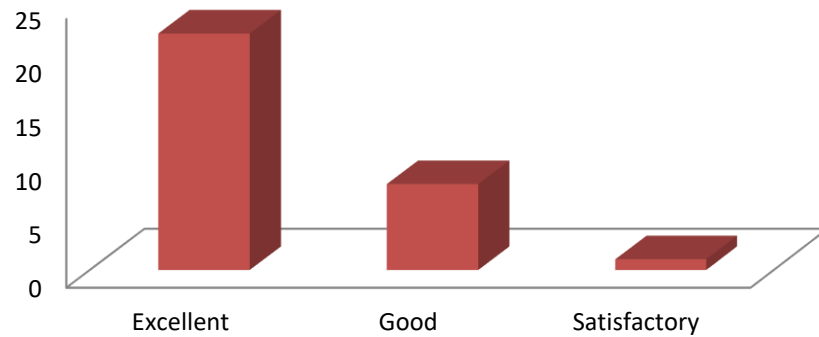
Student diversity and social life in the campus



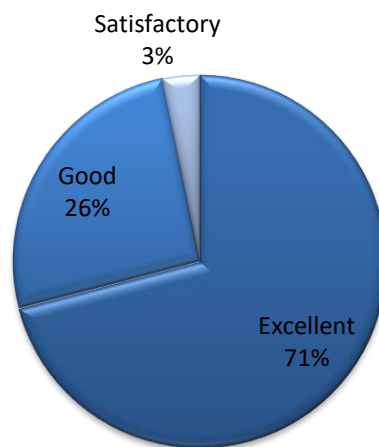
The infrastructural facilities in the college



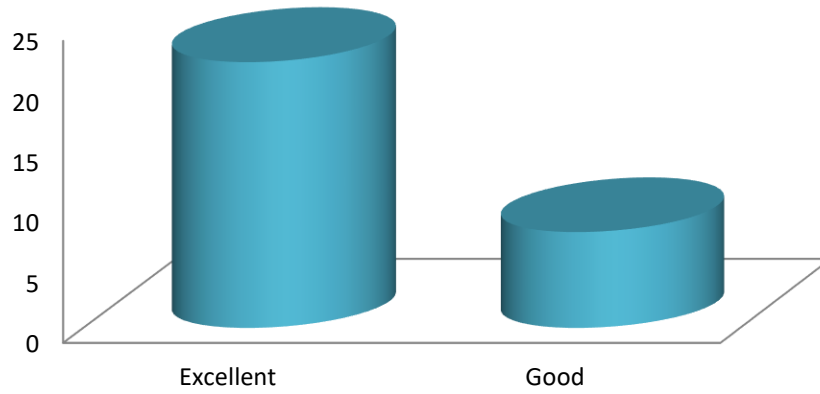
Maintenance of the facilities in the college



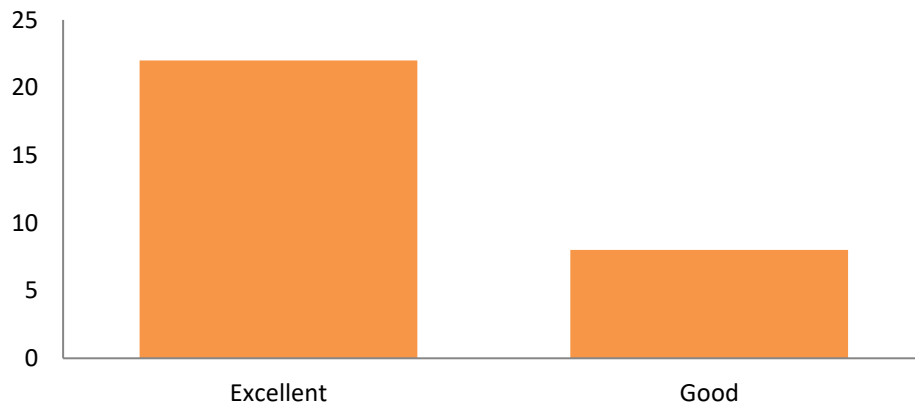
Canteen facilities in the college



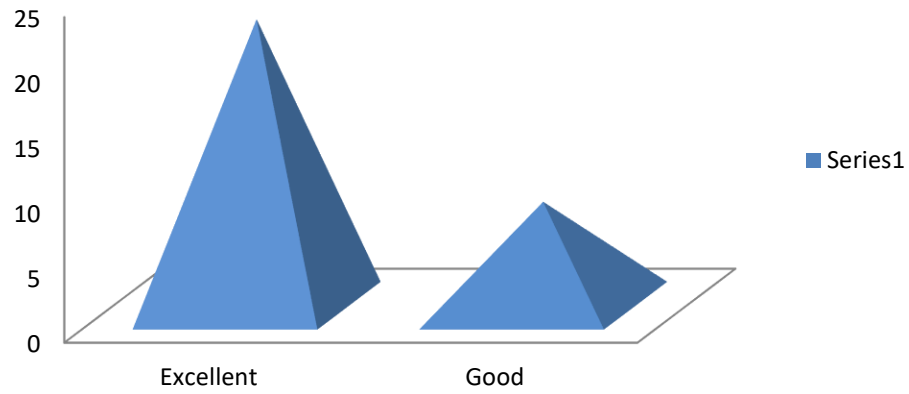
Ease of accessing library resources



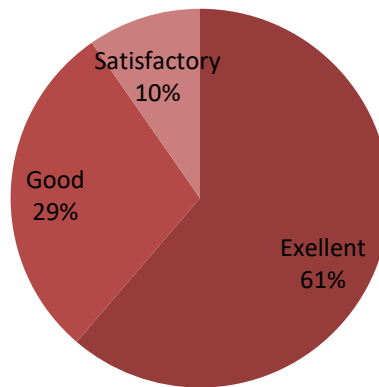
Classrooms and laboratory facilities of the college



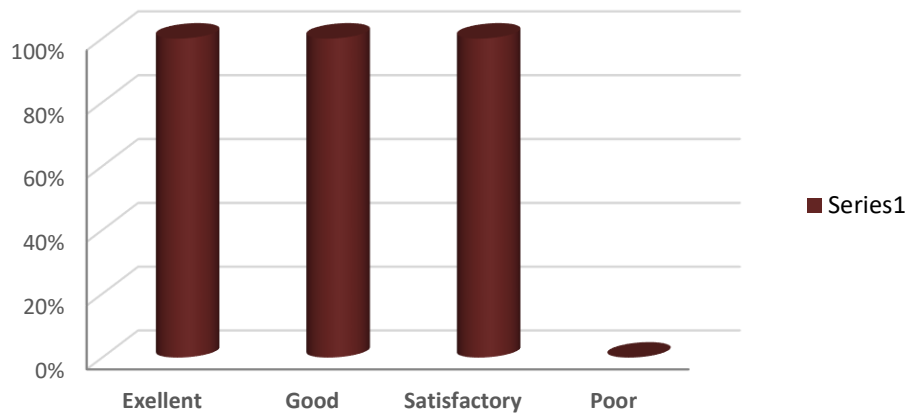
Student support facilities of the institution



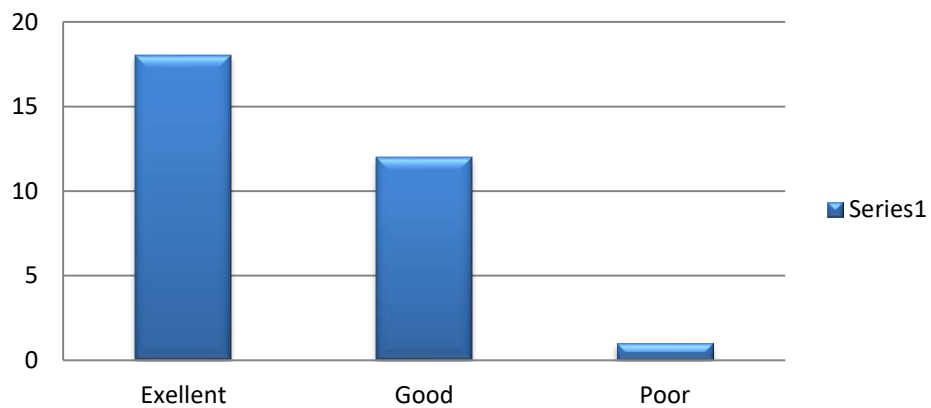
Sports and fitness facilities of the college



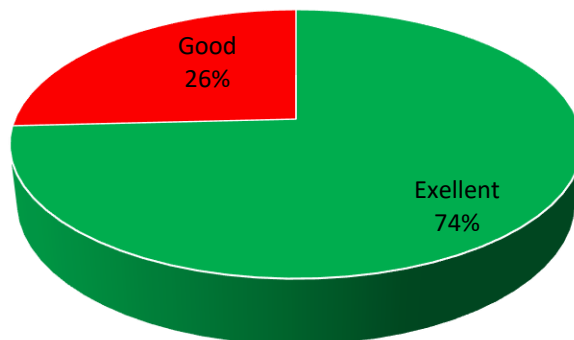
Career counseling and placement services offered by the college



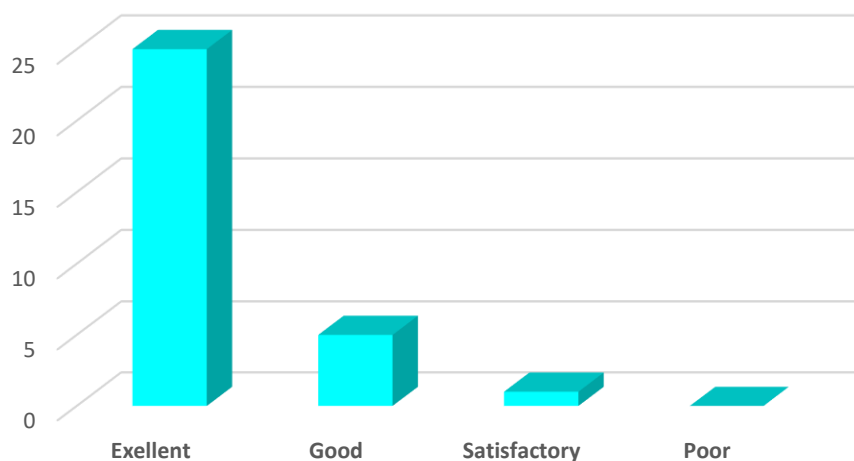
Satisfaction with respect to the college policies



Opinion on this educational institution to be recommended for others



Overall Quality level of the Institution



General Observations

The college boasts a strong reputation for its experienced faculty and comprehensive curriculum, fostering proficient educators. However, the college may face challenges in keeping up with evolving teaching methodologies and integrating technology effectively in their training programs. The college provides all facilities very well. The learning environment is excellent and enriching educational opportunities are providing here. The major comments are; Provides all support for the overall development of the individual, Excellent academic and institutional facilities, Strength - faculties and infrastructure, Qualified, supportive teachers are the main strength, Strengths: Infrastructure Teachers are PhD holders Gives importance to the inculcation

of values and development of teaching skills and competencies All round development of students Give personal and group guidance Weaknesses: Co- curricular activities should be given importance, Accessibility of teachers in matters related to academic and personal guidance is excellent, Institution gives immense importance in academic and non academic matters, infrastructure, clean campus, strict discipline and well qualified teachers, Eco friendly campus and strict discipline are the main highlights of the institution, Personal care from the part of the faculty, Excellent teachers, collaboration, good environment to grow. The teachers ensure that the practicals and other works are done on time; Provides adequate learning materials; tries well to make the students professionally qualified teachers, etc

Major Findings

Regarding Teaching Learning and Evaluation with respect to the Academic Level of the College, Quality of Learning and Evaluation Activities, Quality and Proficiency of Teachers, Efficacy of the Programme, Academic Advising and Research Mentoring, Accessibility of Teaching faculty, Academic collaboration among Students, Education for Future Life, and Importance for Value based Education, the students had given high preferences/scores to the institution and its activities. In all the components the majority preference is Excellent or Good. It shows the students are highly satisfied with the teaching-learning and evaluation process offered in this institution. In general, the institution gives more importance to the quality of teachers, teaching-learning process, evaluation, research orientation, etc. The aspects considered such as, Learning Environment, Facilities of the Institution and General Observation on the activities/programmes/ quality concerns of the institution, the students gave good feedback.

Actions for Betterment

1. More facilities in the Canteen
2. Increase Canteen time
3. Training for attending the interviews and arranging more campus interviews.